

JCDecaux

LIGHTING IMPACT ASSESSMENT -
OUTDOOR SIGNAGE AT BEECROFT ROAD, EPPING, NSW

27th May 2022
Ref: 3023.29

Lighting Impact Assessment Outdoor Signage at Beecroft Road, Epping, NSW

Electrolight Australia Pty Ltd
ABN: 44 600 067 392

info@electrolight.com
www.electrolight.com

4/414 Bourke St
Surry Hills, NSW 2010
T + 612 9267 4777

DATE	REV	COMMENT	PREPARED BY	CHECKED BY
27/05/22	REV A	For Information	NL	RS

CONTENTS

1. INTRODUCTION	3
2. DEFINITIONS	3
2.1 Illuminance	3
2.2 Luminance	3
2.3 Luminous Intensity	3
2.4 Obtrusive Light	3
2.5 Threshold Increment	3
2.6 AGI32 Light Simulation Software	3
2.7 Upward Light Ratio (ULR)	3
3. SITE DESCRIPTION AND SCOPE	4
4. DESIGN GUIDELINES AND STANDARDS	4
5. LUMINANCE ASSESSMENT	5
6. AS4282 ASSESSMENT	6
7. SUMMARY	8
8. DESIGN CERTIFICATION	9
APPENDIX A	10
APPENDIX B	12
APPENDIX C	14
APPENDIX D	16

1. INTRODUCTION

Electrolight have been appointed by JCDeaux to undertake a Lighting Impact Assessment on the proposed portrait digital signage at Beecroft Road, Epping, NSW. The objective of the assessment is to report on compliance with the State Environmental Planning Policy (Industry and Employment) 2021, NSW Transport Corridor Outdoor Advertising and Signage Guidelines, and AS4282-2019 Control of the Obtrusive Effects of Outdoor Lighting.

2. DEFINITIONS

2.1 Illuminance

The physical measure of illumination is illuminance. It is the luminous flux arriving at a surface divided by the area of the illuminated surface. Unit: lux (lx); 1 lx = 1 lm/m².

(a) Horizontal illuminance (E_h) The value of illuminance on a designated horizontal plane

(b) Vertical illuminance (E_v) The value of illuminance on a designated vertical plane

Where the vertical illuminance is considered in the situation of potentially obtrusive light at a property boundary it is referred to as environmental vertical illuminance (E_{ve}).

2.2 Luminance

The physical quantity corresponding to the brightness of a surface (e.g. a lamp, luminaire or reflecting material such as the road surface) when viewed from a specified direction. SI Unit: candela per square metre (cd/m²) – also referred to as “nits”.

2.3 Luminous Intensity

The concentration of luminous flux emitted in a specified direction. Unit: candela (cd).

2.4 Obtrusive Light

Spill Light which, because of quantitative, directional or spectral attributes in a given context, gives rise to annoyance, discomfort, distraction or a reduction in the ability to see essential information.

2.5 Threshold Increment

The measure of disability glare expressed as the percentage increase in contrast required between a standard object and its background (the carriageway) for it to be seen equally as well with the source of glare present as with it absent, derived in the specified manner. This metric is directly related to Veiling Luminance.

NOTE: The required value is a maximum for compliance of the lighting scheme.

2.6 AGI32 Light Simulation Software

AGI32 (by U.S. company Lighting Analysts) is an industry standard lighting simulation software package that can accurately model and predict the amount of light reaching a designated surface or workplane. AGI32 has been independently tested against the International Commission On Illumination (CIE) benchmark, CIE 171:2006, Test Cases to Assess the Accuracy of Lighting Computer Programs.

2.7 Upward Light Ratio (ULR)

The ratio between the luminous flux emitted above the horizontal plane to the total flux emitted by a light source. The ULR is used as a measure to limit direct spill light to the sky.

3. SITE DESCRIPTION AND SCOPE

The proposed portait digital signage is located on the Beecroft Road rail overpass. The signage is oriented towards the westbound traffic on Beecroft Road and Epping Road. The total active display (illuminated) area of the proposed signage is 14.16 m2. The digital signage it to be in 24 hour operation. Refer to Appendix A for proposed signage location plan and elevations.

The proposed digital signage is illuminated using LEDs installed within the front face. The brightness of the LEDs shall be controlled to provide upper and lower thresholds as required as well as automatically via a local light sensor to adjust to ambient lighting conditions.

For the purpose of this report the proposed manufacturer of the digital signage is noted as Big Screen Video model type YH-DT6-HB1-J with performance parameters as outlined in Appendix B. The signage include baffles which mitigate upward waste light, resulting in an Upward Light Ratio (ULR) of less than 50%. Alternative digital sign manufacturers may be used for this installation as long as they have equivalent lighting and performance characteristics and are commissioned as described in this report.

4. DESIGN GUIDELINES AND STANDARDS

The Lighting Impact Assessment will review the proposed digital signage against the following Criteria, Design Guidelines and Standards.

- State Environmental Planning Policy (Industry and Employment) 2021 (Refer Appendix C)
- Transport Corridor Outdoor Advertising & Signage Guidelines 2017
- AS 4282-2019 Control of the Obtrusive Effects of Outdoor Lighting

5. LUMINANCE ASSESSMENT

The maximum permissible night time luminance of the signage is determined by the existing lighting environment of its surroundings. AS4282 outlines maximum average luminances for different Environmental Zones as shown in Table 1 below:

TABLE 1 - MAXIMUM NIGHT TIME AVERAGE LUMINANCE FOR SIGNAGE		
Environmental Zone	Description	Max Average Luminance (cd/m2)
A4	High district brightness e.g. Town and city centres, commercial areas, and residential areas abutting commercial areas	350
A3	Medium district brightness e.g. suburban areas in towns and cities	250
A2	Low district brightness e.g. sparsely inhabited rural and semi-rural areas	150
A1	Dark e.g. relatively uninhabited rural areas. No Road Lighting	0.1
A0	Intrinsically Dark e.g. Major Optical Observatories. No Road Lighting	0.1

Note: Where the signage is viewed against a predominantly dark background (e.g. night sky) then the maximum applicable environmental zone is A2

Based on an assessment of the surrounding environment, the proposed signage is located within Environmental Zone A4 under AS4282, therefore, the maximum night time luminance is 350cd/m2.

AS4282 does not include limits for daytime operation of illuminated signage. However, the Transport Corridor Outdoor Advertising & Signage Guidelines outlines maximum permissible luminance limits for various lighting conditions, including daytime. Under the Guidelines, the proposed signage is classified as being within Zone 3, which is described as an area with generally medium off-street ambient lighting, eg. small to medium shopping/ commercial centres. The maximum night time luminance of a digital signage within Zone 3 is 350 cd/m2.

Table 2 outlines the maximum luminance levels to comply with AS4282 and the Transport Corridor Outdoor Advertising & Signage Guidelines for the various lighting conditions listed below:

TABLE 2 - LUMINANCE LEVELS FOR DIGITAL ADVERTISEMENTS		
Lighting Condition	Max Permissible Luminance (cd/m2) #	Compliant
Full Sun on face of Signage	No Limit	✓
Day Time Luminance (typical sunny day)	6000	✓
Morning and Evening Twilight and Overcast Weather	500	✓
Night Time	350	✓

The signage is to be dimmed on site to ensure the maximum luminance nominated above is not exceeded.

It is our opinion that signage that is illuminated to the maximum luminances outlined above would be visually consistent with the existing ambient lighting and suitable for the local area. A more detailed night time lighting assessment is provided in Section 6.0.

6. AS4282 ASSESSMENT

The proposed signage has been assessed against AS 4282-2019 Control of the Obtrusive Effects of Outdoor Lighting as outlined in Section 4.

AS4282 provides limits for different obtrusive factors associated with dark hours (night time) operation of outdoor lighting systems. Two sets of limiting values for spill light are given based on whether the lighting is operating before a curfew (known as “pre-curfew” operation) or operating after a curfew (known as post-curfew or curfewed operation). Pre-curfew spill lighting limits are higher than post-curfew values, on the understanding that spill light is more obtrusive late at night when residents are trying to sleep. Under AS4282, the post-curfew period is taken to be between 11pm and 6am daily. As the signage operates all night, the signage will be assessed against the more stringent post-curfew limits.

Illuminance Assessment

The AS4282 assessment includes a review of nearby residential dwellings and calculation of the amount of illuminance (measured in Lux) that the properties are likely to receive from the signage during night time operation.

The acceptable level of illuminance will in part be determined by the night time lighting environment around the dwellings. AS4282 categorises the night time environment into different zones with maximum lighting limits as shown in Table 3 below:

TABLE 3 - MAXIMUM VALUES OF LIGHT TECHNICAL PARAMETERS			
Environmental Zone	Max Vertical Illuminance (lx)		Description
	Pre-curfew	Post-curfew	
A0	0	0	Intrinsically Dark e.g. Major Optical Observatories. No Road Lighting
A1	2	0.1	Dark e.g. relatively uninhabited rural areas. No Road Lighting
A2	5	1	Low district brightness e.g. sparsely inhabited rural and semi-rural areas
A3	10	2	Medium district brightness e.g. suburban areas in towns and cities
A4	25	5	High district brightness e.g. Town and city centres, commercial areas, and residential areas abutting commercial areas

Based on an assessment of the surrounding areas, the nearest dwellings with potential views to the signage are at the following locations:

Address	Zone
12-40 Langston Place	A4
725 Blaxland Road	A4
2-16 Epping Road	A4
7 Epping Road	A4

As such, the dwellings above will form the focus of the illuminance assessment.

The proposed signage (and surrounding environment) was modelled in lighting calculation program AGI32 to determine the effect (if any) of the light spill from the proposed signage. Photometric data for the screen was provided by the signage manufacturer*, with luminances corresponding to the night time limit outlined in Section 5. Appendix D shows the lighting model and the results of the calculations.

It should be noted that some of the houses are shielded by mature vegetation which effectively obstructs the spill light of the signage. However calculations were undertaken assuming there was no vegetation present as outlined in AS4282

It can be seen from the lighting model that the maximum illuminance to dwellings in Zone A4 is 2.2 lux at 12-40 Langston Place. The illuminance levels above comply with the maximum AS4282 limit of 5 lux for Zone A4 properties as outlined in Table 3.

Luminous Intensity

The luminous intensity limits nominated in the standard are not applicable for internally illuminated signage.

Threshold Increment Assessment

The Threshold Increment was also calculated for the northbound traffic approach on Blaxland Road (northbound), Epping Road (westbound), Langston Place (southbound) and the northbound Trainline approach. The calculation grids were located at 1.5m above ground level for general traffic approaches and 2m above ground for rail approaches, with an approach viewing distance of between 15 m to 200 m from the sign and a windscreen cutoff angle of 20 degrees (as outlined in AS1158). The calculation results show that the Threshold Increment does not exceed 13% for any traffic approach (the allowable maximum under the standard is 20%).

Additional AS4282 Requirements:

The signage operator must ensure that the average luminance difference between successive images does not exceed 30% to ensure compliance with AS4282. The dwell time shall be 10 seconds or greater to comply with the minimum requirements of AS4282.

Summary

It can therefore be seen that the proposed digital signage complies with all relevant requirements of AS 4282-2019 Control of the Obtrusive Effects of Outdoor Lighting.

* Electrolight takes no responsibility for the accuracy of third party provided photometric data.

7. SUMMARY

- The proposed portait digital signage to be installed at Beecroft Road, Epping, NSW shall be commissioned on site to yield the following maximum luminances:

LUMINANCE LEVELS FOR DIGITAL ADVERTISEMENTS		
Lighting Condition	Max Permissible Luminance (cd/m2)	Compliant
Full Sun on face of Signage	No Limit	✓
Day Time Luminance (typical sunny day)	6000	✓
Morning and Evening Twilight and Overcast Weather	700	✓
Night Time	350	✓

- The signage operator must ensure that the average luminance difference between successive images does not exceed 30% to ensure compliance with AS4282. The dwell time shall be 10 seconds or greater in order to comply with the requirements of AS4282.
- The proposed digital signage has been found to comply with all relevant requirements of AS 4282-2019 Control of the Obtrusive Effects of Outdoor Lighting.
- In complying with the above requirements, the proposed digital signage should not result in unacceptable glare nor should it adversely impact the safety of pedestrians, residents or vehicular traffic. Additionally, the signage should not cause any reduction in visual amenity to nearby residences or accommodation.

8. DESIGN CERTIFICATION

The proposed portrait digital signage to be installed at Beecroft Road, Epping, NSW, if commissioned according to this report, complies with the following criteria, guidelines and standards:

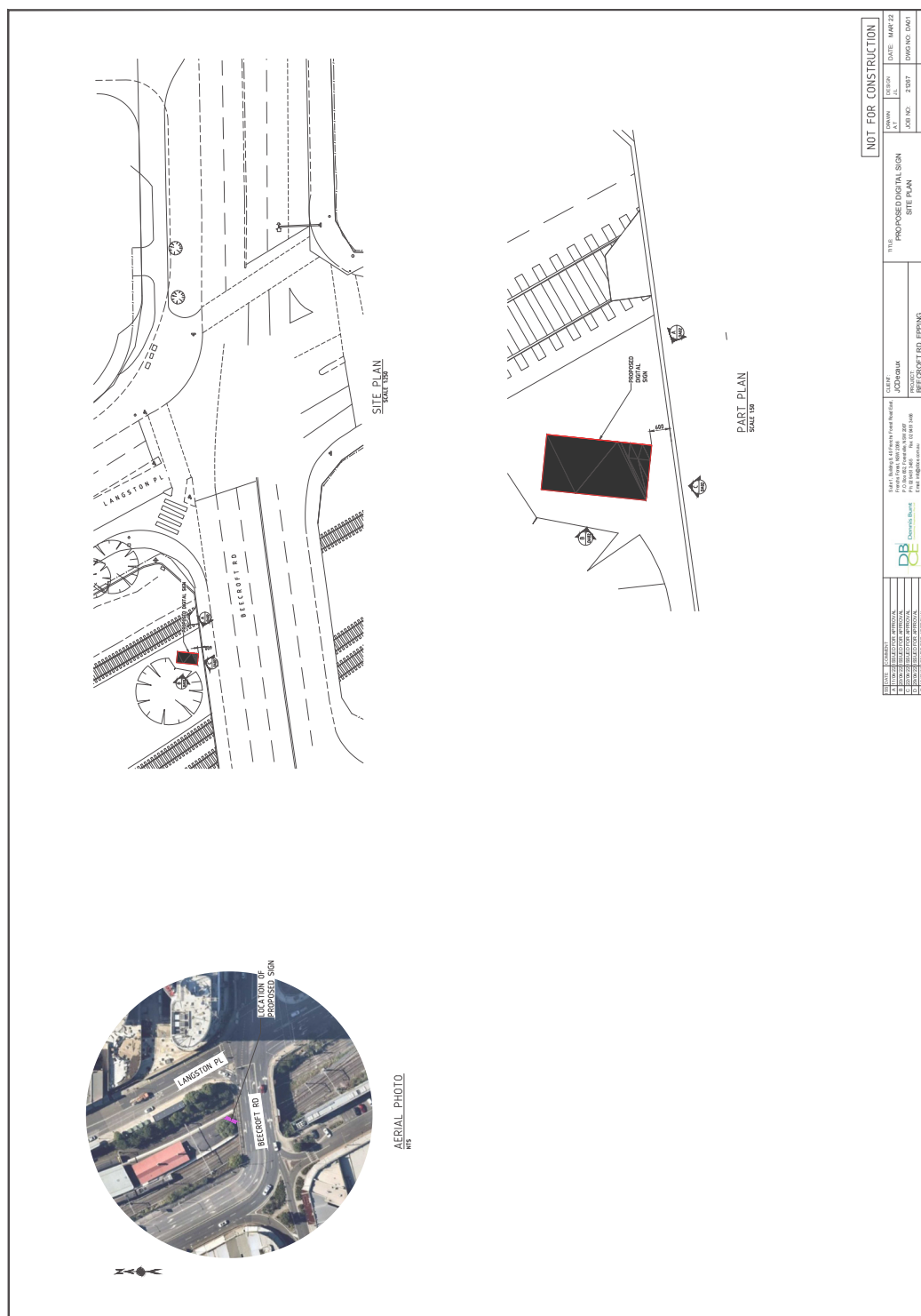
- State Environmental Planning Policy (Industry and Employment) 2021 (Refer Appendix C)
- Transport Corridor Outdoor Advertising & Signage Guidelines 2017.
- AS 4282-2019 Control of the Obtrusive Effects of Outdoor Lighting.

A handwritten signature in black ink, appearing to read 'Adam Shum', with a long horizontal flourish extending to the right.

Senior Lighting Designer
Electrolight Sydney
27/05/22

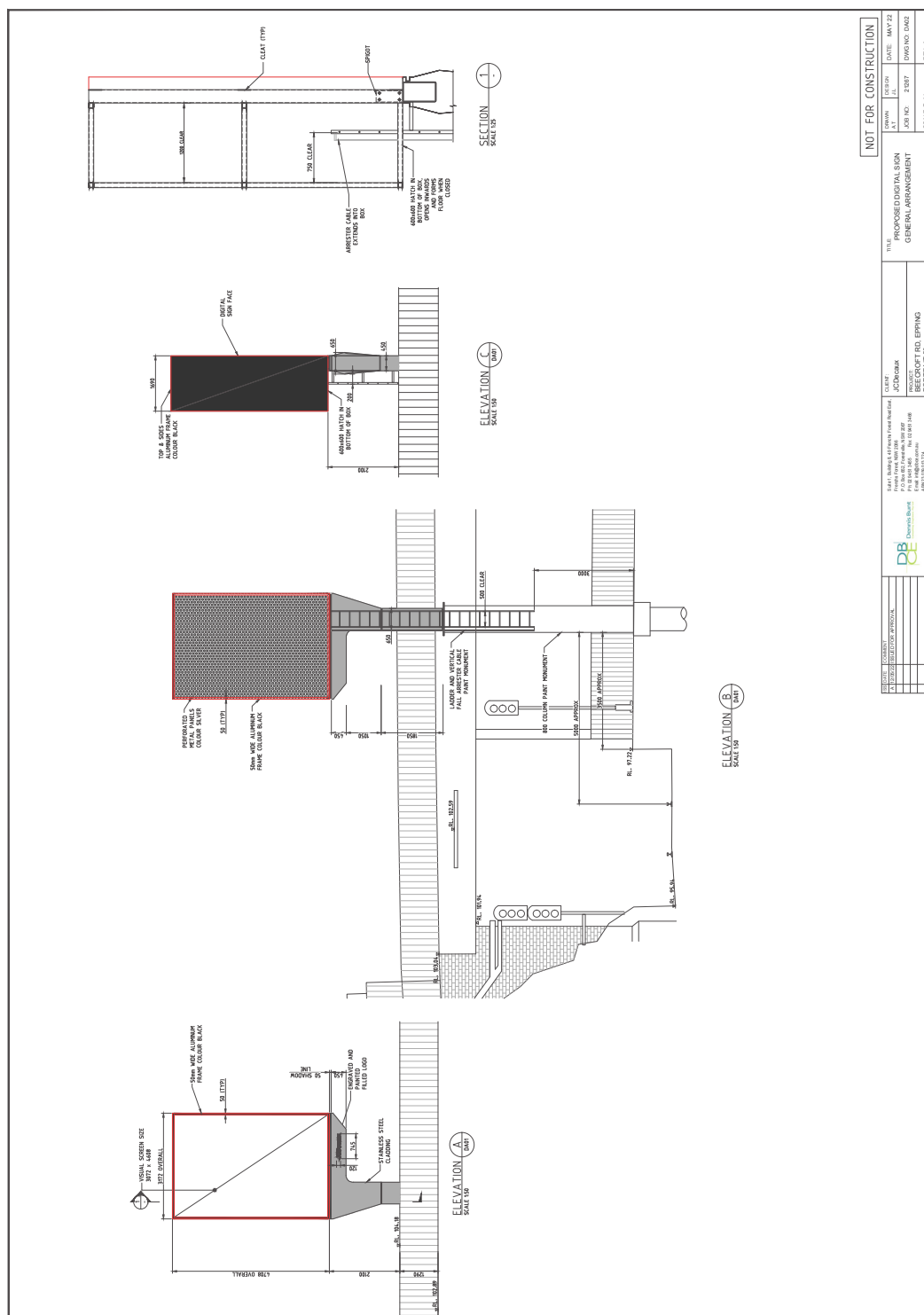
APPENDIX A

SIGNAGE LOCATION



APPENDIX A

SIGNAGE LOCATION



Big Screen Video

Display Specification

Product Specifications	
Active Screen Size (WxH)	3.072mW x 4.608mH
Active Screen Size (SqM)	14.16sqm
Matrix Size (WxH)	512 x 768
Aspect Ratio	0.7:1
Display Weight	821kg
Display Weight per Sqm	58kg
Total Avg. Power Consumed	2.97k
Total Max. Power Consumed	8.49kW
Max. Power Consumption per Sqm	0.6kW/m²
Current Draw	36 amps max load*
Mains Recommendation	Three phase at 20 amps per phase

*Doesn't allow for in-rush current

Bringing spaces to life.

Big Screen Video

Specifications: Outdoor 6mm SMD

Product Specifications	
Catalogue no.	YH-DTG-HB1-J
Physical Pitch	6mm, physical
Pixel Density	27,777 pixel/m2
Pixel Configuration	SMD LED
Module Dimensions (WxH)	192mm x 192mm
Module Resolution (WxH)	32 x 32 pixels
Cabinet Material	Steel
Viewing Angle	H 140 Deg. / V 120 Deg.
Best Viewing Distance	6+m
Maintenance	Front access
Protection Degree	IP65 front; IP54 rear

Product Specifications	
Panel Net Weight	approx. 58kg/sqm
Gray Scale	16-bit Color Processing Depth
Refresh Rate	3840+ Hz
Display Control	Synchronous control
Power Supply	220V, 50Hz
Operation Temp.	-20° ~60°
Display Dimming	Auto/Manual, 8-256 Levels
Signal Transfer	Text, image, graphics animations, video
Power Consumption (Max./Avg.)	0.6kw/sqm; 0.2kw/sqm
Lifetime	100,000hrs
Luminance	6000 nits

APPENDIX C

State Environmental Planning Policy (Industry and Employment) 2021

Schedule 5 Assessment criteria

(Clauses 8, 13 and 17)

1. Character of the area

- Is the proposal compatible with the existing or desired future character of the area or locality in which it is proposed to be located?
- Is the proposal consistent with a particular theme for outdoor advertising in the area or locality?

2. Special areas

- Does the proposal detract from the amenity or visual quality of any environmentally sensitive areas, heritage areas, natural or other conservation areas, open space areas, waterways, rural landscapes or residential areas?

3. Views and vistas

- Does the proposal obscure or compromise important views?
- Does the proposal dominate the skyline and reduce the quality of vistas?
- Does the proposal respect the viewing rights of other advertisers?
-

4. Streetscape, setting or landscape

- Is the scale, proportion and form of the proposal appropriate for the streetscape, setting or landscape?
- Does the proposal contribute to the visual interest of the streetscape, setting or landscape?
- Does the proposal reduce clutter by rationalising and simplifying existing advertising?
- Does the proposal screen unsightliness?
- Does the proposal protrude above buildings, structures or tree canopies in the area or locality?
- Does the proposal require ongoing vegetation management?

5. Site and building

- Is the proposal compatible with the scale, proportion and other characteristics of the site or building, or both, on which the proposed signage is to be located?
- Does the proposal respect important features of the site or building, or both?
- Does the proposal show innovation and imagination in its relationship to the site or building, or both?

6. Associated devices and logos with advertisements and advertising structures

- Have any safety devices, platforms, lighting devices or logos been designed as an integral part of the signage or structure on which it is to be displayed?

7. Illumination

- Would illumination result in unacceptable glare?
- Would illumination affect safety for pedestrians, vehicles or aircraft?
- Would illumination detract from the amenity of any residence or other form of accommodation?
- Can the intensity of the illumination be adjusted, if necessary?
- Is the illumination subject to a curfew?

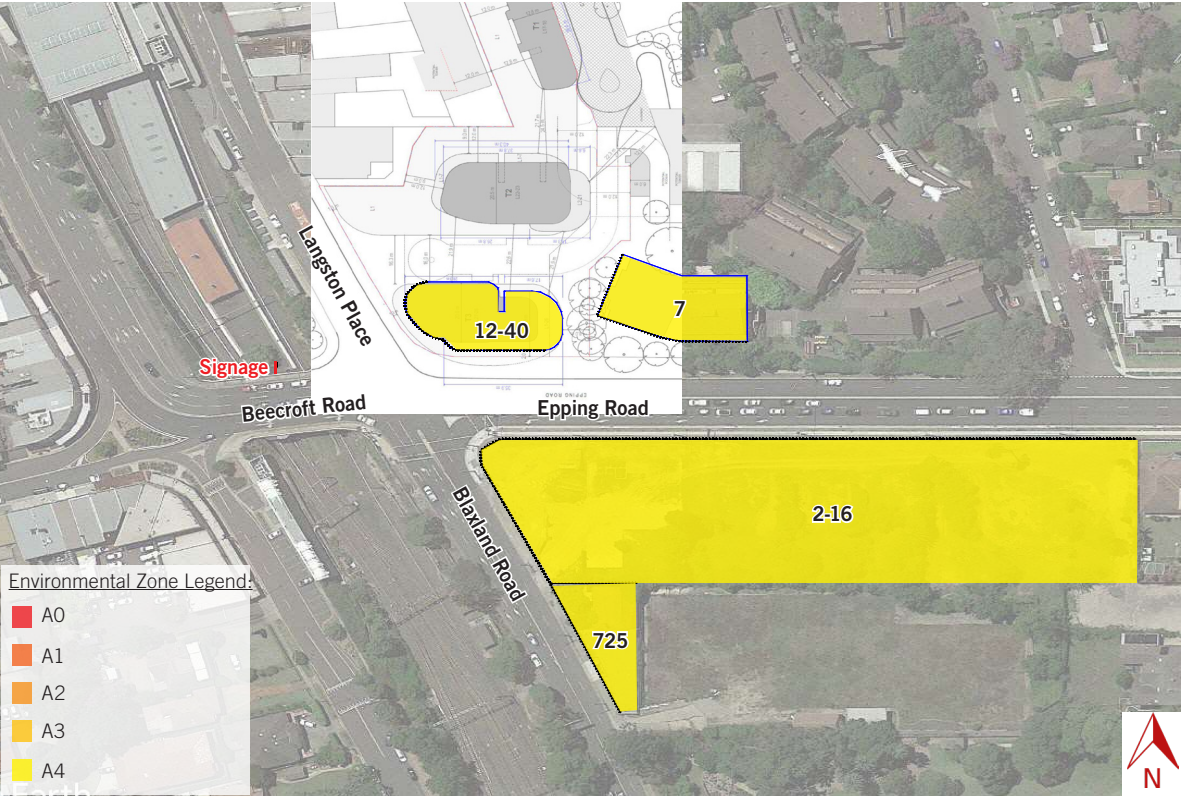
8. Safety

- Would the proposal reduce the safety for any public road?
- Would the proposal reduce the safety for pedestrians or bicyclists?
- Would the proposal reduce the safety for pedestrians, particularly children, by obscuring sightlines from public areas?

APPENDIX D

OBTRUSIVE LIGHTING AND THRESHOLD INCREMENT CALCULATIONS

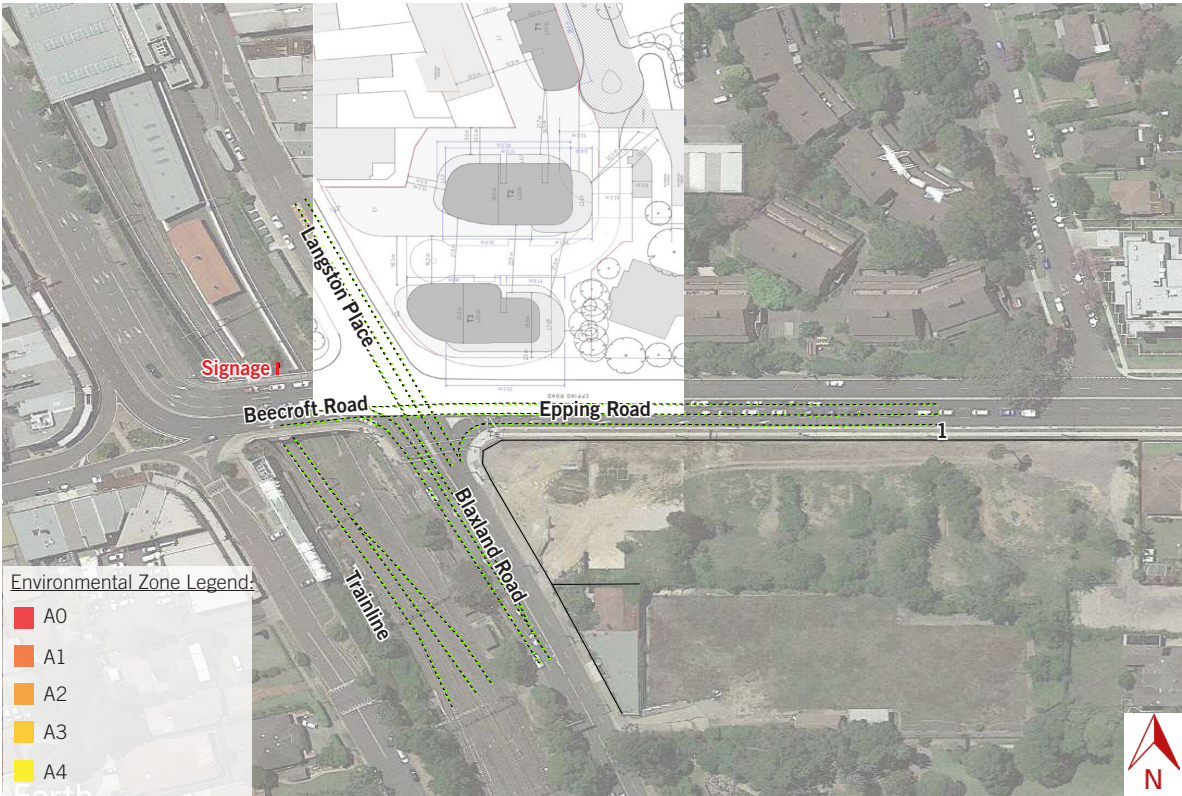
Calculation Summary				
Label	CalcType	Units	Max	
12-40 Langston Place Ill Seg1	Obtrusive - Ill	Lux	0.0	
12-40 Langston Place Ill Seg10	Obtrusive - Ill	Lux	2.2	
12-40 Langston Place Ill Seg11	Obtrusive - Ill	Lux	1.8	
12-40 Langston Place Ill Seg12	Obtrusive - Ill	Lux	1.3	
12-40 Langston Place Ill Seg13	Obtrusive - Ill	Lux	0.0	
12-40 Langston Place Ill Seg14	Obtrusive - Ill	Lux	0.0	
12-40 Langston Place Ill Seg15	Obtrusive - Ill	Lux	0.0	
12-40 Langston Place Ill Seg2	Obtrusive - Ill	Lux	0.0	
12-40 Langston Place Ill Seg3	Obtrusive - Ill	Lux	0.0	
12-40 Langston Place Ill Seg4	Obtrusive - Ill	Lux	1.3	
12-40 Langston Place Ill Seg5	Obtrusive - Ill	Lux	1.7	
12-40 Langston Place Ill Seg6	Obtrusive - Ill	Lux	0.8	
12-40 Langston Place Ill Seg7	Obtrusive - Ill	Lux	1.3	
12-40 Langston Place Ill Seg8	Obtrusive - Ill	Lux	1.9	
12-40 Langston Place Ill Seg9	Obtrusive - Ill	Lux	2.1	
2-16 Epping Place Ill Seg1	Obtrusive - Ill	Lux	0.0	
2-16 Epping Place Ill Seg2	Obtrusive - Ill	Lux	0.9	
2-16 Epping Place Ill Seg3	Obtrusive - Ill	Lux	0.0	
2-16 Epping Place Ill Seg4	Obtrusive - Ill	Lux	0.0	
7 Epping Rd Ill Seg1	Obtrusive - Ill	Lux	0.0	
7 Epping Rd Ill Seg2	Obtrusive - Ill	Lux	0.0	
7 Epping Rd Ill Seg3	Obtrusive - Ill	Lux	0.0	
7 Epping Rd Ill Seg4	Obtrusive - Ill	Lux	0.0	
725 Blaxland Rd Ill Seg1	Obtrusive - Ill	Lux	0.0	
725 Blaxland Rd Ill Seg2	Obtrusive - Ill	Lux	0.0	



APPENDIX D

OBTRUSIVE LIGHTING AND THRESHOLD INCREMENT CALCULATIONS

Calculation Summary			
Label	CalcType	Units	Max
Blaxland Rd (northbound)	Obtrusive - TI	%	0.3
Blaxland Rd Turn (northbound)	Obtrusive - TI	%	13.0
Epping Rd (westbound)	Obtrusive - TI	%	1.7
Epping Rd Turn (westbound)	Obtrusive - TI	%	0.2
Langston Place (southbound)	Obtrusive - TI	%	0.0
Trainline (northbound)	Obtrusive - TI	%	0.3
Trainline 1 (northbound)	Obtrusive - TI	%	0.5
Trainline 2 (northbound)	Obtrusive - TI	%	0.4



APPENDIX D

OBTRUSIVE LIGHTING AND THRESHOLD INCREMENT CALCULATIONS

Obtrusive Light - Compliance Report

AS/NZS 4282:2019, A4 - High District Brightness, Curfew
Filename: 3023.29 Beecroft Rd Epping
27/05/2022 2:56:45 PM

Illuminance

Maximum Allowable Value: 5 Lux

Calculations Tested (25):

Calculation Label	Test Results	Max. Illum.
12-40 Langston Place_III_Seg1	PASS	0.0
12-40 Langston Place_III_Seg2	PASS	0.0
12-40 Langston Place_III_Seg3	PASS	0.0
12-40 Langston Place_III_Seg4	PASS	1.3
12-40 Langston Place_III_Seg5	PASS	1.7
12-40 Langston Place_III_Seg6	PASS	0.8
12-40 Langston Place_III_Seg7	PASS	1.3
12-40 Langston Place_III_Seg8	PASS	1.9
12-40 Langston Place_III_Seg9	PASS	2.1
12-40 Langston Place_III_Seg10	PASS	2.2
12-40 Langston Place_III_Seg11	PASS	1.8
12-40 Langston Place_III_Seg12	PASS	1.3
12-40 Langston Place_III_Seg13	PASS	0.0
12-40 Langston Place_III_Seg14	PASS	0.0
12-40 Langston Place_III_Seg15	PASS	0.0
2-16 Epping Place_III_Seg1	PASS	0.0
2-16 Epping Place_III_Seg2	PASS	0.9
2-16 Epping Place_III_Seg3	PASS	0.0
2-16 Epping Place_III_Seg4	PASS	0.0
725 Blaxland Rd_III_Seg1	PASS	0.0
725 Blaxland Rd_III_Seg2	PASS	0.0
7 Epping Rd_III_Seg1	PASS	0.0
7 Epping Rd_III_Seg2	PASS	0.0
7 Epping Rd_III_Seg3	PASS	0.0
7 Epping Rd_III_Seg4	PASS	0.0

Threshold Increment (TI)

Maximum Allowable Value: 20 %

Calculations Tested (8):

Calculation Label	Adaptation Luminance	Test Results
Epping Rd (westbound)	5	PASS
Blaxland Rd Turn (northbound)	5	PASS
Epping Rd Turn (westbound)	5	PASS
Blaxland Rd (northbound)	5	PASS
Trainline (northbound)	5	PASS
Trainline_1 (northbound)	5	PASS
Trainline_2 (northbound)	5	PASS
Langston Place (southbound)	5	PASS